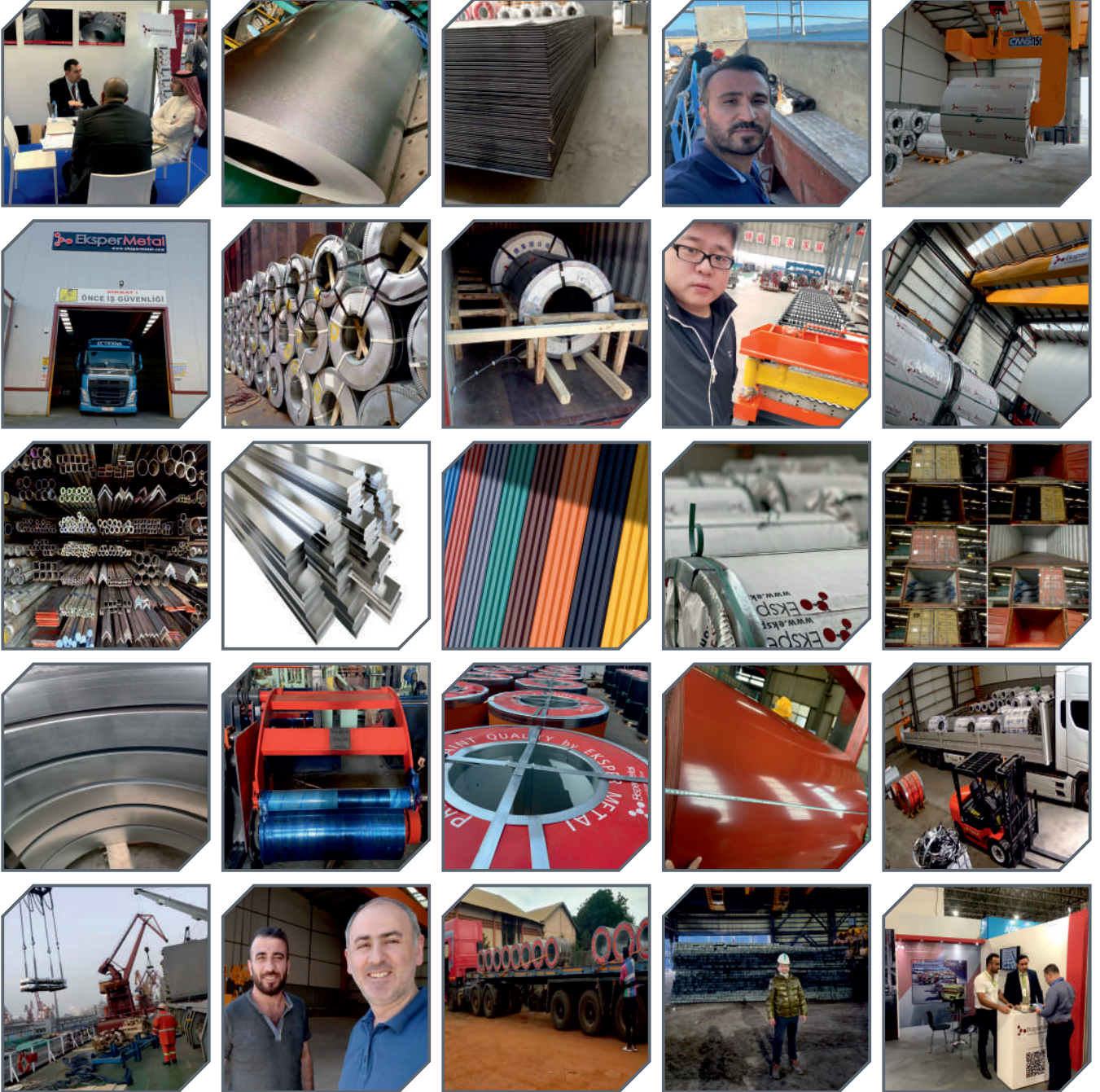


www.ekspermetal.com



What we do

Eksper Metal is established in Istanbul to work on international steel trading in 2014, January. It's main activity is to set-up a trustworthy bridge between the iron-steel producers in Turkey/Far East/Europe and it's customers which are mainly located in Middle East, Europe, Africa, CIS countries and South America.

Thanks to it's expertise and experience on **Coated Flat Steel** products and wide supplier portfolio; Eksper Metal aims to provide raw materials for it's end-user customers' production with lowest costs and expected quality standards.

The trustworthy relationship that Eksper Metal established with it's suppliers and customers, makes it a strategic solution partner where the customers apply for sourcing "**metal sheet processing lines, long steel and non-ferrous metal products**" in addition to flat steel.

Eksper Metal provides wide range of products with demanded quality through a global network and it's ability of determining and carrying out innovations worldwide.

Eksper Metal opened its own warehouse in 2022 in Kocaeli, one of Turkey's 3 steel production centers. It supplies many colors and sizes of materials from stock to export customers from this warehouse, which is especially focused on painted sheet metal coil products.

Its office in China, with its expert quality control engineers, sales offices in **Latin America** and the **Western Balkans** manages its regular relations with suppliers and customers in a widespread geography.

In accordance with it's open minded and dynamic structure, Eksper Metal will be a global player in it's field in a near future.

Prepainted Steel

Quality	Commercial and Special Grades according to American (ASTM), Japanese (JIS) and European (EN) Norms
Surface Coating Color	RAL colors or according to the sample
Back-Side Coating Color	Primer as light grey, white or any other RAL color
Type of Coating Process	Double side painted or one side painted and back is primer
Type of Substrate	Hot Dipped Galvanized, Galvalume/Aluzinc or Cold Rolled
Thickness	0.12 mm – 2.00 mm
Width	30mm – 1500 mm
Coil Weight	2,5-9 Tons
Inner Diameter	508mm or 610mm
Zinc/Aluzinc Coating	Z50-Z275G, AZ40-AZ180
Painting	Top: 15 to 25 um (5 um + 12-20 um) Back: 7 +/- 2 um or Both Side Color Painting
Color Painting Types	PE, SMP, HDP, PVDF
Surface Treatments	Protective Filmed or not, Embossing, Printed or Wrinkled Surfaces
Forms	Coils, Strips, Sheets (cut-to-length), Corrugated, Trapezoid, Metal Tiles

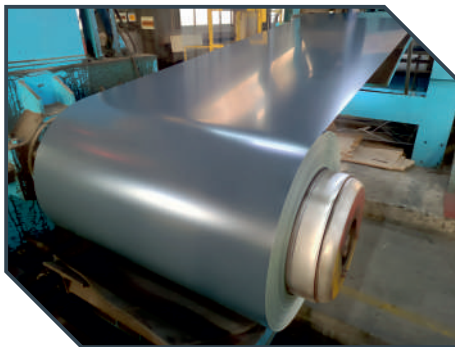
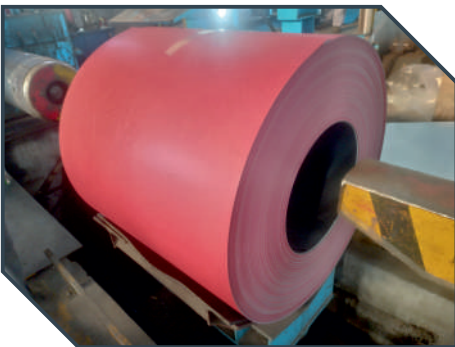
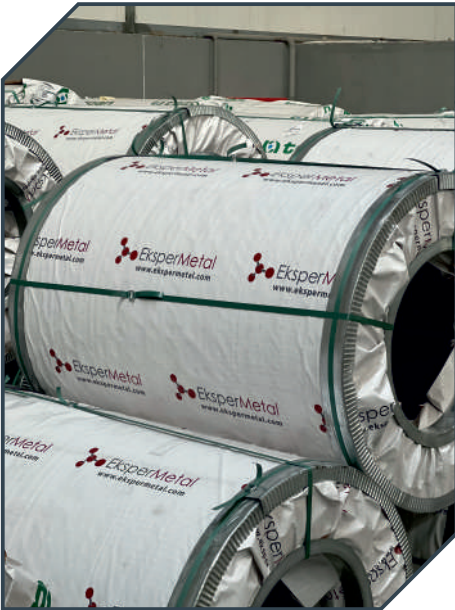
Prepainted steel sheet consists of a steel core, a metal coating, a primer and a top coat.

With Galvanized and Galvalume (Aluzinc) as the substrate, after surface pre-treatment, paint coating, baking and cooling, an organic protective film is formed on the steel substrate. It has strong durability, corrosion resistance, decoration and formability.

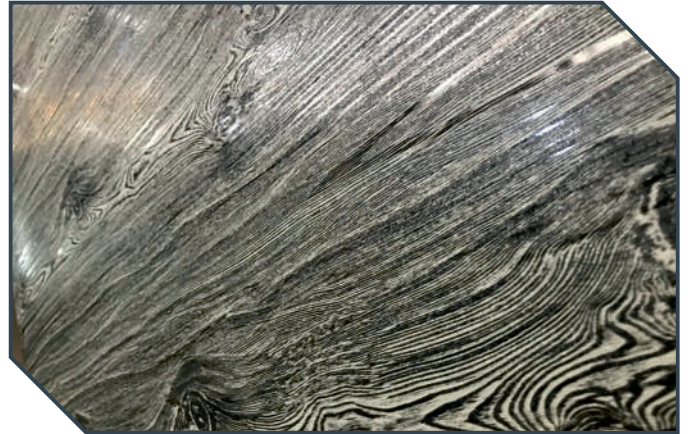
Pre-painted steel metal products are used in a vast array of applications including:

- Construction Industry
- Household Appliances
- Automotive
- Packaging
- Industrial Applications
- Solar Energy

Our main suppliers for Prepainted Steel are Turkey, China, India, Vietnam and Korea.



Wrinkled



Printed

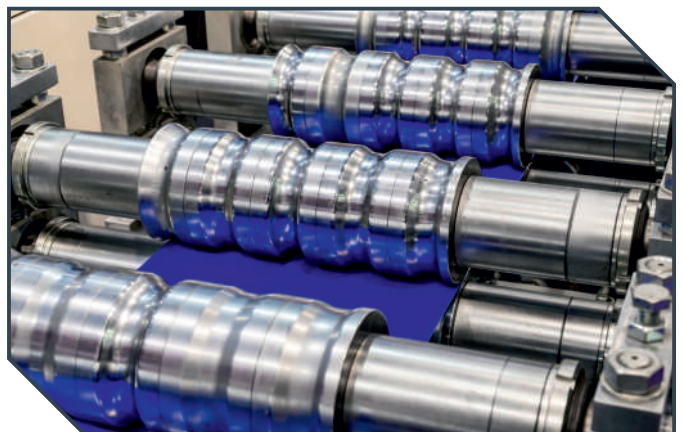
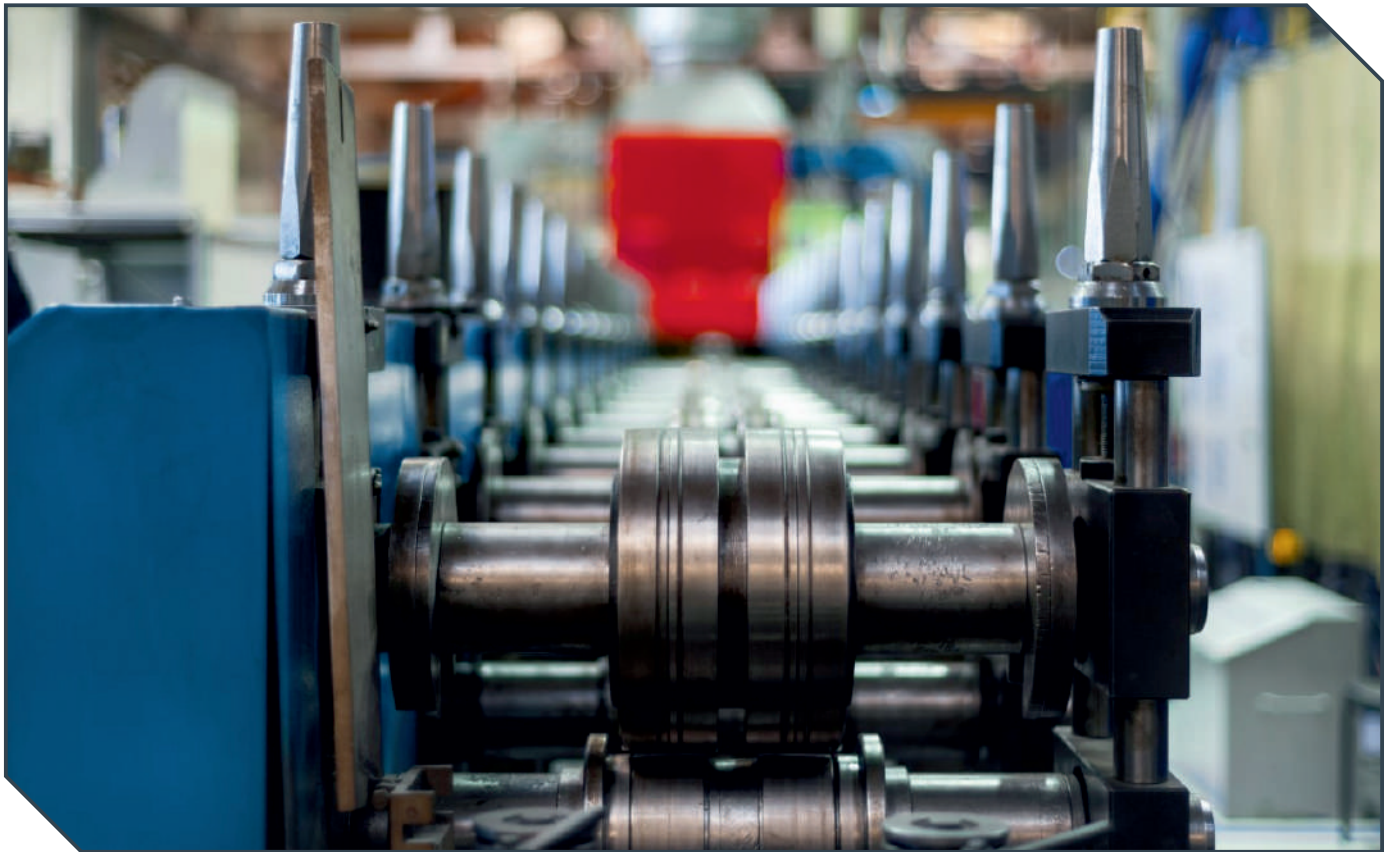
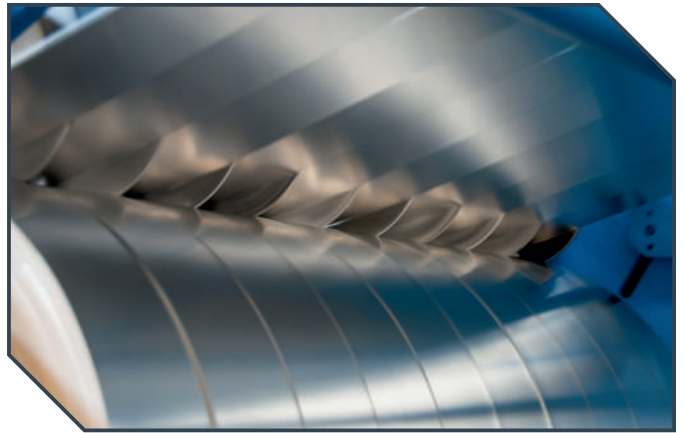


Roof Tile



Metal Sheet Processing Machinery

We supply any kind of metal sheet processing machinery from China and Turkey to our clients with our quality control service and guarantee.



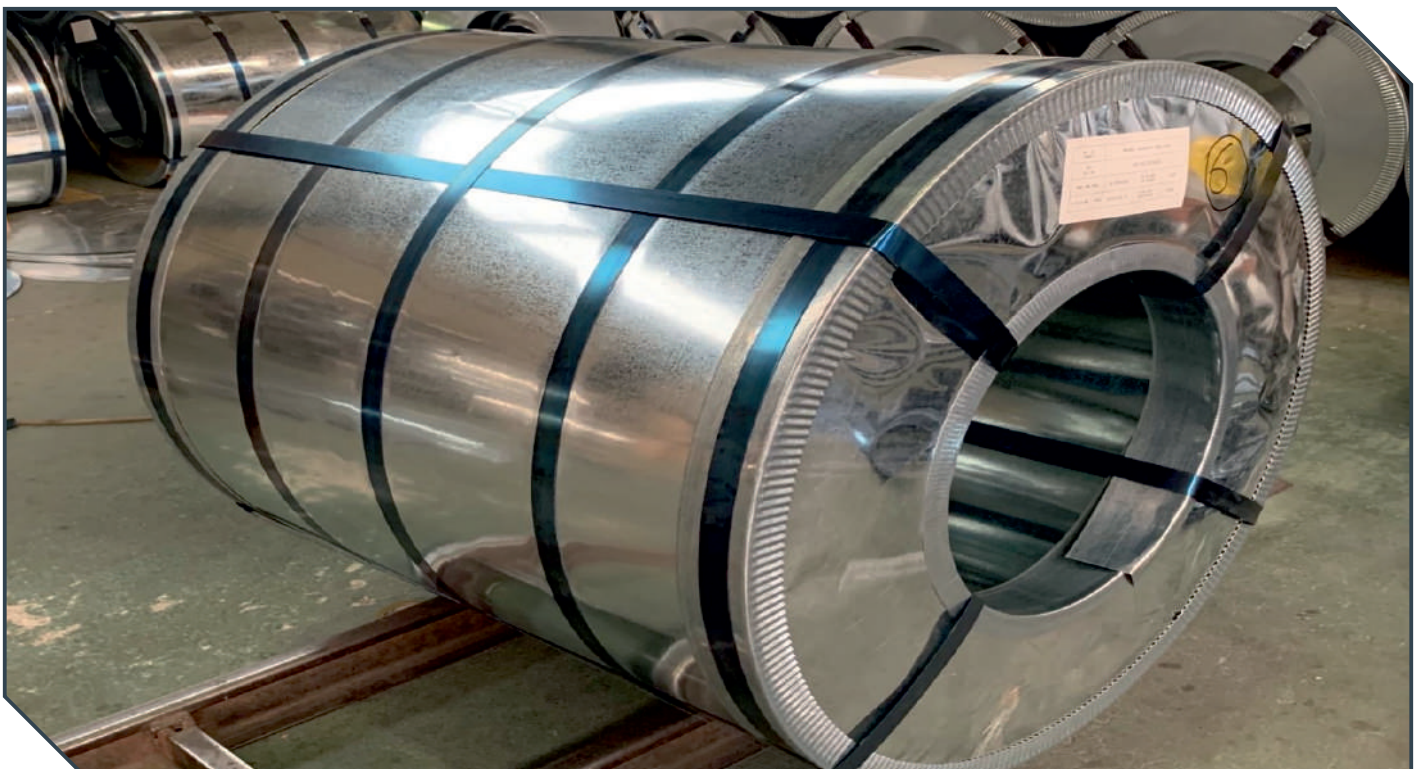
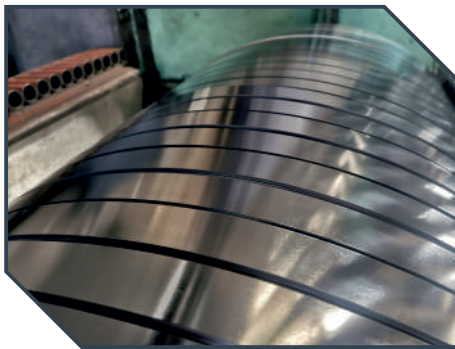
Galvanized Steel

Quality	Commercial and Special Grades according to American (ASTM), Japanese (JIS) and European (EN) Norms
Grades	DX51-DX56, S250-S550, Gr. 33 – Gr.80, G350-G550
Package	Export standard package
Thickness	0.125 mm – 6.00mm
Width	20mm – 1500mm
Coil Weight	500kg to 3 tons for Slit Coils, 3 – 25 Tons for Wide Coils
Inner Diameter	508mm or 610mm
Zinc Coating	Z50-Z600G
Surface Types	Zero Spangle, Minimum Spangle, Regular Spangle
Surface Treatments	Oiled or Non-Oiled
Forms	Coils, Strips, Sheets (cut-to-length), Corrugated, Trapezoid

- Galvanized Steel features excellent forming properties, paintability, weldability, and is suitable for fabrication by forming, pressing and bending.

Typical applications for Galvanized Coil and Sheet products include exterior building products, ductwork, HVAC products, flashing, electrical boxes and other electrical products, roofing, doors, sashes, automotive parts, appliances, commercial and residential steel framing, truss plates, metal building purlins, and any other products requiring a corrosion resistant material.

- Our main suppliers for Prepainted Steel are Turkey, China, India, Vietnam and Korea.



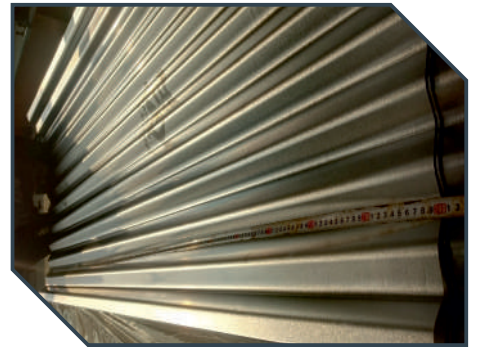
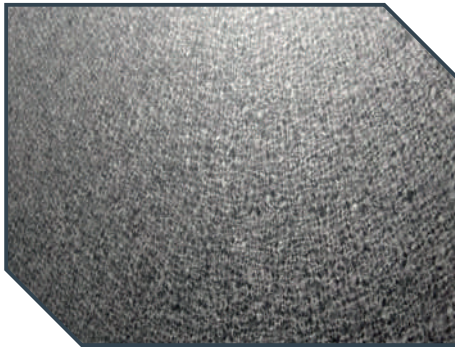
Aluzinc (Galvalume) Steel

Quality	Commercial and Special Grades according to American (ASTM), Japanese (JIS) and European (EN) Norms
Grades	DX51-DX56, G350-G550 etc.
Thickness	0.12 – 2.00 mm
Coil Weight	1,5 – 9 Tons
Aluzinc Coating	AZ50-AZ180G
Surface Types	Minimum Spangle, Regular Spangle
Surface Treatments	Oiled or Non-Oiled, With Antifinger or Without Antifinger Print, Colored Antifinger Print
Package	Export standard package
Width	20mm – 1250mm
Inner Diameter	508mm or 610mm

- The aluminium-zinc (AZ) coating on steel sheet consists of nominally 55 % aluminium, 43,4% zinc and 1,6% silicon, and it is applied by hot dipping in a molten bath.

Aluzinc Steel Coil is widely used for ovens, electrically controlled cabinets, roofs and industrial freezers in various residential and commercial buildings and commonly used for pre-painting process. We offer these coils in different specifications to meet the exact clients' requirements.

- Our main suppliers for Aluzinc Steel are China, India, Turkey, Vietnam and Korea.



Aluminium Coils and Plates

Alloy	1060, 1050, 1070, 1100, 1235, 2024, 2012, 3003, 3004, 3105, 3005, 4343, 5052, 5005, 5754, 5083, 5182, 5454, 6061, 6082, 6063, 6060, 7075, 8011, 8021
Temper	F, H0, H111, H1X, H2X, H3X, DDQ (Deep Drawing Quality)

PRODUCT	SURFACE TREATMENT	THICKNESS RANGE	WIDTH RANGE	LENGTH RANGE
Polished aluminium coils of series 1, series 3 and series 8	Polished aluminium	0.125-5mm	900-1700mm	330-6000mm
Polyester roller-painted aluminium coiled plates	Polyester pre-roller-painting	0.15-1.5mm	Max 1600mm	Coils or plates
Fluorocarbon roller-painted aluminium coiled plates	Polyester pre-roller-painting 8-25µ	0.2-1.5mm	Max 1601mm	Coils or plates
Back-painted aluminium coiled plates	PE Back coating 8-10µ	0.15-1.5mm	Max 1602mm	Coils or plates
Wood grain & stone-imitated aluminium coiled plates	Three painting + glossy overprint	0.2-1.5mm	Max 1603mm	Coils or plates
Color-painted mirror-surface aluminium coiled plates	Single color roller painting 8-16µ	0.18-0.5mm	Max 1400mm	Coils or plates
Embossed aluminium coiled plates	Embossing treatment	0.2-1.2mm	350-1300mm	Coils or plates
Slitting aluminium coils		0.2-3.0mm	21-1595mm	Coils or plates

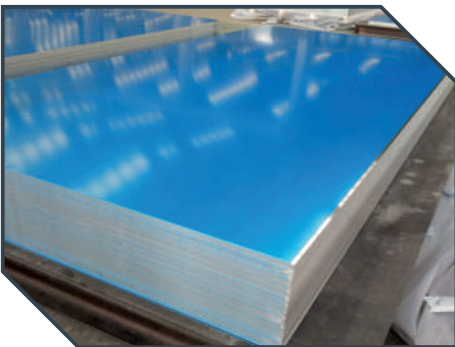
Polished Aluminium

Aluminium is the important basic material of national economy, characteristic high quality, environmental friendly and energy-saving. Aluminum being anti-corrosive, maintenance-free and non-inflammable finds application in Fan Blade, Bus Body, Utensils, Sliver Can, Insulation, Roofing Systems and many more.

Prepainted Aluminium

Any standard colors from RAL catalogs or any samples our clients provide can be produced easily from our partner factories. Main end usages of Prepainted Aluminium coils are Sandwich Panels, Composite Panels, Roofing Sheets, Rain Gutters, Billboards, Garage Doors, Suspended Ceilings, White Goods, Doors and so on. We use special quality paints as Akzo Nobel, KCC, Nippon to supply longer life and no-fading appearance for our clients.

■ We supply Aluminium products mainly from Turkey and China



Cold Rolled Steel

Quality	Commercial and Special Grades according to American (ASTM), Japanese (JIS) and European (EN) Norms
Grades	DC01-DC06, -EK, HC260LA-HC420LA, SAE 1008-SAE 1006 etc
Different Qualities acc to applications	Enamelling Quality, Full Hard Quality, Deep Drawing Quality
Package	Export standard package
Width	20mm – 1780 mm
Thickness	0.20-3.00 mm
Coil Weight	1,5 – 15 Tons
Inner Diameter	508mm or 610mm
Surface Treatments	Oiled or Non-Oiled, Bright, Black Annealed
Forms	Coils, Strips, Sheets (cut-to-length)

- Cold rolled steel sheets offer a variety of outstanding properties, including easy formability and a smooth clean surface. They are used in construction, automobile sector, home appliances, furniture, and many other everyday items.
To meet the various end use requirements, cold-rolled sheet products are metallurgically designed to provide specific attributes such as high formability, deep drawability, high strength, high dent resistance, good magnetic properties, enamelability and paintability.

- **We supply Cold Rolled Steel Coils especially from well known Turkish factories and Chinese state owned factories to worldwide clients in industrial sectors.**



Reinforcing Bar / Rebar

Quality	Commercial and Special Grades according to American (ASTM), Japanese (JIS) and European (EN) Norms
Grades	BS4449 460, ASTM A615 Gr.40/Gr.60, etc.
Diameter / Length	6 mm – 54 mm / 6 m, 8 m, 9 m, 12 m, 18 m

Rebar (short for reinforcing bar) is collectively known as reinforcing steel and reinforcement steel, it is a steel bar or mesh of steel wires used as a tension device in reinforced concrete and reinforced masonry structures to strengthen and hold the concrete in compression.

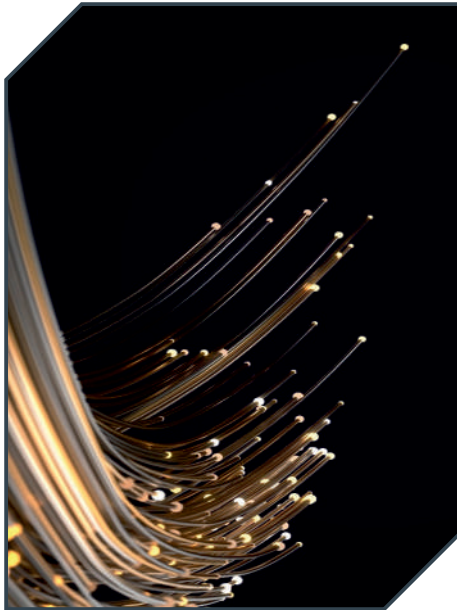
We supply rebars from Turkey with best conditions in breakbulk and container shipments to mainly Africa market. The forms we supply for rebar are in coils or folded in containers or straight depend on the clients' requests.

Wire Rod

Quality	Commercial and Special Grades according to American (ASTM), Japanese (JIS) and European (EN) Norms
Grade	SAE1008-SAE1022, Q195, Q235, LY, H08A, XER70S-6, S45C, S20C, 10B10, 10B18, 10B21, 10B28, 10B33, 10B38, SWRCH6A~15A, WRCH35K/40K/45K, ML08AI, SWRCH18A/22A, SWRH77B, SWRH42A/62A/72A/72B/77B/82B, XGLX72A, SWRH82B, 30MnSiB, 30MnSi, ML40Cr, SCM435, SCM440, 50BV30, SCr420B, CHIT, XGM6, GCr15, 20CrMnTi, 30CrMnTi, 20Mn2, 25MnV
Diameter	5.5 mm, 6.5 mm, 8 mm, 10 mm, 12 mm to 34 mm

In order to improve the surface quality of wire rods, the surfaces of the materials, billets, are descaled by shot blasting. And after inspecting any surface flaw and imperfection by a magnetic particle tester, the flaws are removed from the surface by using a grinding machine. In addition, the continuous ultrasonic testing is conducted to guarantee the internal quality of the billets.

Wire Rod applications are Automobile, General Engineering, Cold Drawing, Cold Forming, Spring Applications, Welding, Wire Ropes, Tools, Heat Treatment, Machining, Bearings etc. We supply wire rods from Turkey to Latin America markets mainly and so on.



Hot Rolled Steel

Quality	Commercial and Special Grades according to American (ASTM), Japanese (JIS) and European (EN) Norms
Grade	Q195, Q235, Q345, SS400, SM490A, A36, A572 Gr. 50, S235JR, S275JR, S355JR and as per customer specification
Width	50 mm – 2100 mm
Thickness	1.20 -25.4 mm
Length	1.000 – 20.000 mm
Coil Weight	6 – 39 Tons
Inner Diameter	508 mm, 610 mm, 762 mm
Surface Treatments	Oiled or Non-Oiled, Pickled or not Pickled
Forms	Coils, Strips, Sheets (cut-to-length)

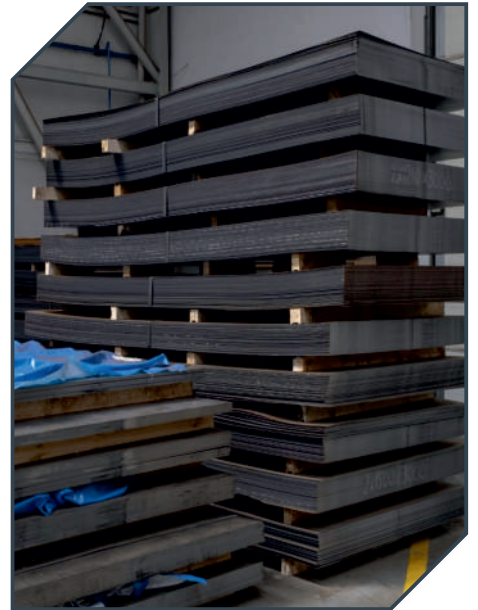
- Hot-Rolled Steel Sheets and Coils meeting a variety of standards ranging from mild steels to high-tensile strength steels are available. Variable sizes of cut sheets, coils, and various surface finishes such as black finish, pickled finish and shot-blasted finish can be selected in accordance with your needs.

Hot Rolled Steel Plates

Quality	Commercial and Special Grades according to American (ASTM), Japanese (JIS) and European (EN) Norms
Grade	A36, A572 Gr.50, S235JR, SS400, ST37, Q235, A515 Gr.60, API 5L Gr.A, S355J2+N, P235GH, BV-A, ABS and as per customer specification
Width	1.700 – 3.200 mm
Thickness	6 mm – 100 mm
Length	3.000 – 13.000 mm
Surface Treatments	Shot-blasting, Painting, etc.
Applications	Structure, Shipbuilding, Machinery, Boilers etc.

- Hot rolled plate is manufactured in a wide range of sizes for applications in several industries varying from construction, pressure vessel and wear resistant applications.

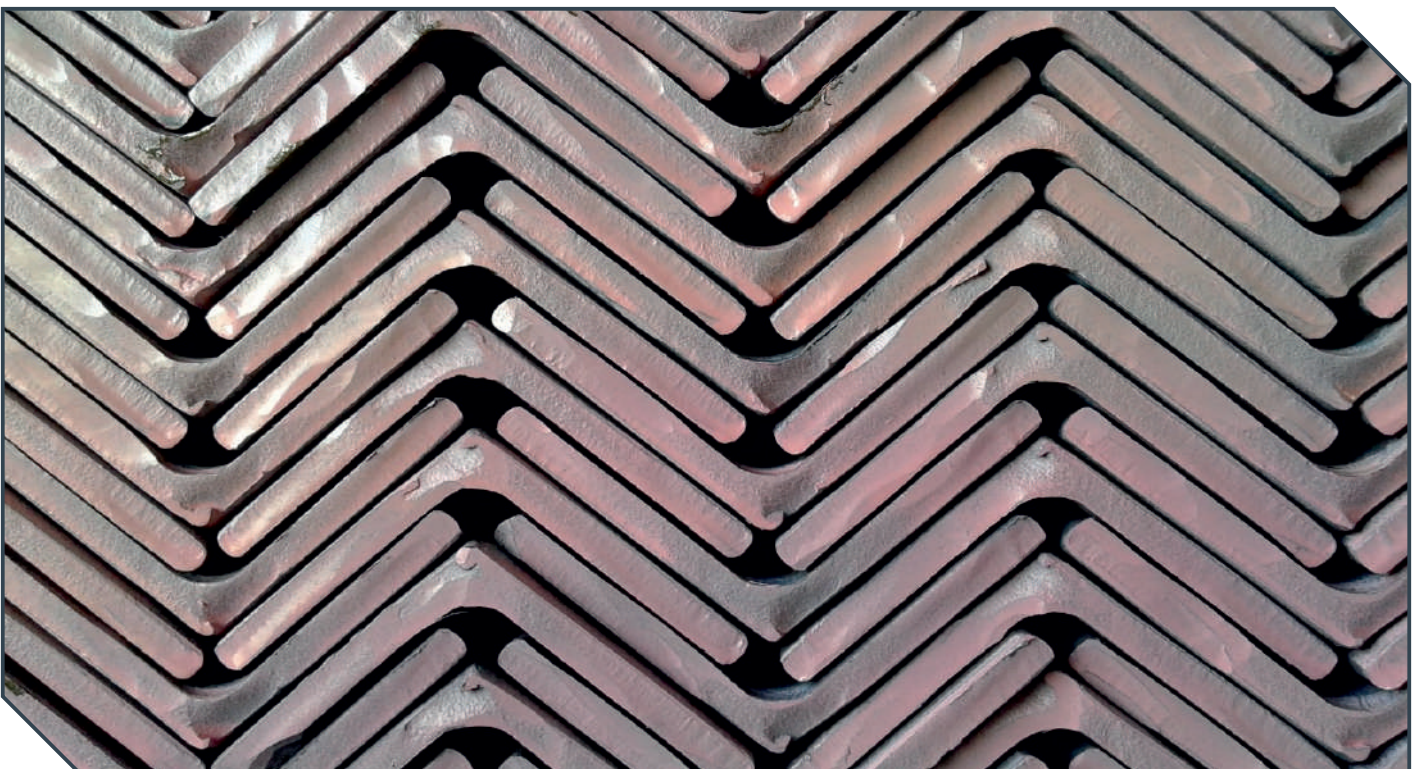
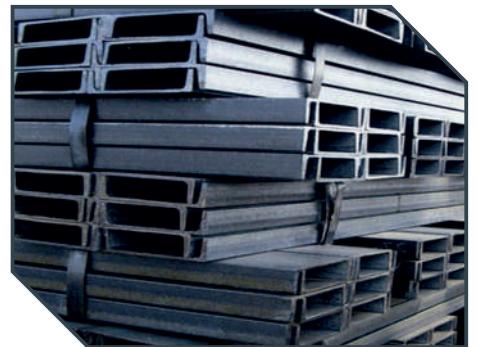
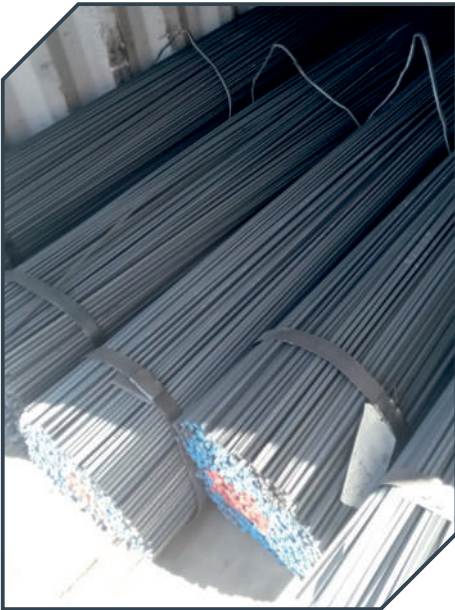
- We supply Hot Rolled Steel Plates and Coils from Turkey, India, China and Europe



Merchant Bars and Profiles

- Merchant bars are used by structural steel fabricators to build a number of different products. They come in flats, rounds, steel angles, squares, strips, channels – almost any form. They are generally used in structural applications that involves welding, bending, punching and forming and are commonly found in floor and roof joists, walkways and railings.

Standart	ASTM, BS, DIB, AISI, GOST, JIS, ISO, SAE, SI, TS, UNI, EURONORM, AFNOR (NF)
Quality	ST 37.2 / ST 44.2 / ST 52.3 DIN 17100, ASTM A36 / ASTM A 572, JIS G 3101, S 4360, 3 SP/PS GOST 380 88
Length	6 – 12 meters
Equal Angles	20x20x2mm – 200x200x25mm
Flat Bars	10x3 mm – 150x20 mm
Square Bars	8 x 8 mm – 50 x 50 mm
Round Bars	5 mm – 1000 mm,; Carbon, Case Hardening, Spring, Micro Alloyed, Bearing
T Bars	20x20x3 mm – 140x140x15 mm
HEA, HEB, HEM Profiles	100 mm – 1000 mm
UPE, UAC, PFC Profiles	UPE: 80 mm – 270 mm, UAC: 30 mm – 70 mm, PFC: 75 mm – 300 mm
IPN, UPN Profiles	IPN: 80 mm – 500 mm, UPN: 30 mm – 500 mm
IPE, IPEA, IPEAA, IPEAAAA Profiles	IPE: 80 mm – 750 mm, IPEA: 80 mm – 300 mm, IPEAA: 80 mm – 200 mm, IPEAAA: 80 mm – 200 mm, IPEAAAA: 80 mm – 200 mm



Turkey Office – Headquarters

Atatürk Mahallesi, Ataşehir Bulvarı, No:23,
Evinpark Sitesi, A3 Blok, D:1 TR-34758
Ataşehir / İstanbul / Turkey
Tel: +90 216 504 16 96 **Fax:** +90 850 227 06 52
E-mail: info@ekspermetal.com

Turkey Warehouse

Karadeniz Mahallesi, Bilim Sokak, No:13/2
Başiskele / Kocaeli / Turkey
Tel: +90 262 502 68 27
E-mail: info@ekspermetal.com

Latin America Office

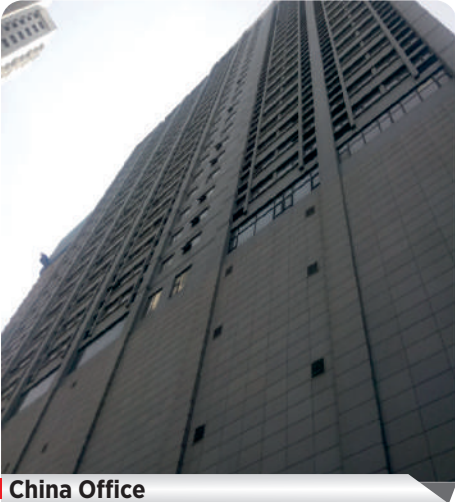
Capitan Victoriano Bueno 572. Oficina 104.
Asuncion, Paraguay **Tel:** +595-981-288950
Email: latinamerica@ekspermetal.com

Western Balkans Office

Square 21" Residence Ent. 2, Fl 2, Ap. 5,
Kavaja Street, Tiranë, Albania
Mobil: +35 568 201 56 55 **Tel:** +35 542 44 00 01
E-mail: kastriot.jahaj@ekspermetal.com

China Office

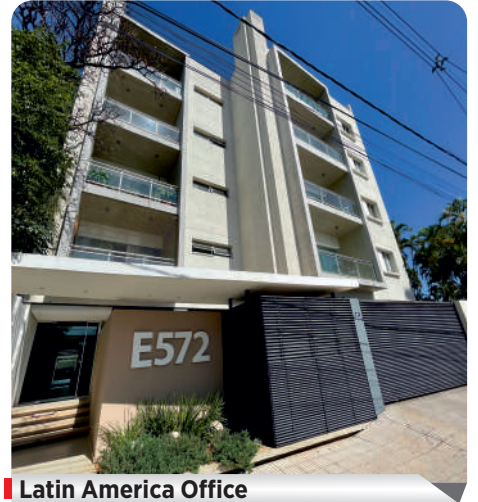
Building 3, Binjiang No.1 Community ,Shenzhen Road,
Zhoucun District,Zibo City, Shandong Province, China
Email: jack.lee@ekspermetal.com



China Office



Turkey Office



Latin America Office



Western Balkans Office



Turkey Warehouse

